



Taking a more refined approach to tailoring, this chic blouse offers movement and ease in a fine crepe fabric and soft fit. Adjustable button cuffs and a trend-right dropped hem add style and versatility for day to night wear.

**Fabric+Weight**

- 4.3-ounce, 95/5 poly/spandex

**Features+Benefits**

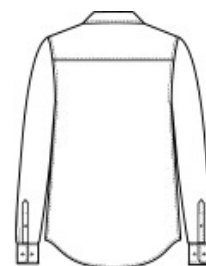
- Open, camp-style collar
- Double patch pockets
- Adjustable button cuffs
- Drop hem
- Back yoke

**CARE INSTRUCTIONS**

Machine Wash Cold With Like Colors. Only Non-Chlorine Bleach If Needed. Tumble Dry Low. Remove Promptly. Cool Iron If Needed.

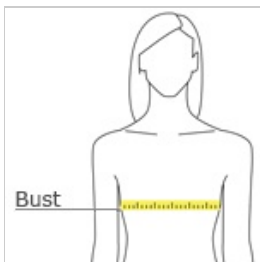


front



back

**HOW TO MEASURE**



**BUST**

Measure under the arm and around the fullest part of the bust with arms down, keeping tape horizontal.

**SIZE CHART**

|      | XS    | S     | M     | L     | XL    | 2XL   | 3XL   | 4XL   |
|------|-------|-------|-------|-------|-------|-------|-------|-------|
| Size | 2     | 4/6   | 8/10  | 12/14 | 16/18 | 20/22 | 24/26 | 28/30 |
| Bust | 32-34 | 35-36 | 37-38 | 39-41 | 42-44 | 45-47 | 48-51 | 52-55 |

**COLOR INFORMATION**



Anchor Grey  
PMS 426C



Deep Black  
PMS BLACK C



Ivory Chiffon  
PMS 9043C



Townsend Green  
PMS NO MATCH