

PORT AUTHORITY.

Port Authority® Packable Puffy Jacket J850

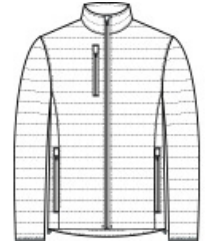


Staying w arm w hile on the go has never been easier w ith our Packable Puffy Jackets. Thanks to a w ater-repellent fabric coating and finish, you'll remain comfortable no matter w here your day takes you.

- 100% polyester shell and lining
- 2.4-ounce, 100% polyfill insulation
- Interior storm flap w ith chin guard
- Reverse coil zippers w ith rubber-w rapped zipper pulls
- Zippered chest pocket
- Front zippered pockets
- Elastic binding at cuffs
- Adjustable locking draw cord at hem
- Port Pocket® for decoration access
- Dyed-to-match draw string carrying pouch included

CARE INSTRUCTIONS

Machine w ash cold w ith like colors. Do not bleach. Tumble dry low. Cool iron. Do not use fabric softener. Do not dry clean.

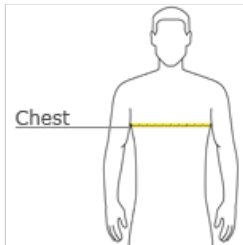


front



back

HOW TO MEASURE



CHEST WIDTH

Measure under the arm and around the fullest part of the chest with arms down n, keeping tape horizontal.

SIZE CHART

	XS	S	M	L	XL	2XL	3XL	4XL
Chest	32-34	35-37	38-40	41-43	44-46	47-49	50-53	54-57

COLOR INFORMATION



Cobalt Blue
PMS 7687C



Deep Black
PMS NTR BLACK
C



Fire Red/ Graphite
PMS 202C



Regatta Blue/
River Blue Navy
PMS 2380C



Sterling Grey/
Graphite
PMS 7540C



Tree Green/ Marine
Green
PMS 342C