

PORT AUTHORITY.

# Port Authority® Puffy Vest. J709

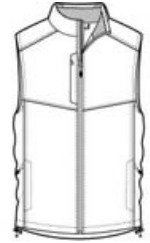


Keep the warmth centered on your core in our Puffy Vests. These wind-resistant, water-repellent styles are great for layering over a long sleeve shirt or under a jacket. Some feature a colorful lining.

- 100% polyester shell with water-resistant finish, 100% polyester lining, 6-ounce polyfill
- Zip-through cadet collar
- Hidden zippered chest pocket
- Reverse coil zipper
- Interior storm flap
- Interior zippered pocket
- Interior pocket with draw cord and toggle
- Front zippered pockets
- Port Pocket™ for decoration access
- Open hem with draw cord and toggles for adjustability

**CARE INSTRUCTIONS**

Machine wash cold with like colors. Use mild detergent. Do not bleach. Tumble dry low remove promptly. Cool iron if necessary. Do not dry clean.

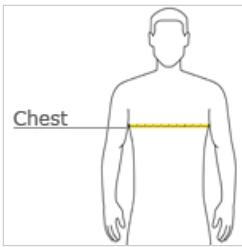


front



back

**HOW TO MEASURE**



**CHEST WIDTH**

Measure under the arm and around the fullest part of the chest with arms down, keeping tape horizontal.

**SIZE CHART**

	XS	S	M	L	XL	2XL	3XL	4XL
Chest	32-34	35-37	38-40	41-43	44-46	47-49	50-53	54-57

**COLOR INFORMATION**



Black/ Black  
PMS NTR BLACK  
C



Dark Slate/ Black  
PMS 432C



Mediterranean Blue/  
Black  
PMS 2118C



Olive/ Cayenne  
PMS 7771C