

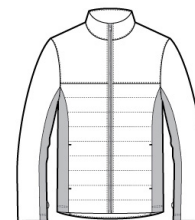
**PORT AUTHORITY**

**Port Authority® Collective Insulated Jacket. J902**

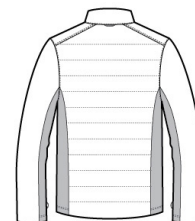


This jacket combines the warmth of low-bulk quilted insulation with flexible soft shell side panels for a trend-right, weather-resistant look.

- Can be zipped in and secured by snap attachments inside an outer Collective layer
- 100% polyester woven shell
- 100% polyester printed lining with 100% polyfill insulation behind the outer quilted woven shell
- 100% polyester knit bonded to a water-resistant film insert and a 100% polyester microfleece lining at side panels and under arms
- 3000MM fabric waterproof rating
- 1000G/M2 fabric breathability rating
- Slightly longer length
- Molded center front zipper
- Stretch side panels
- Open front pockets
- Port Pocket™ for decoration access



front

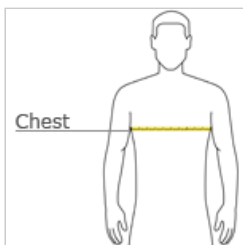


back

**CARE INSTRUCTIONS**

Machine wash cold with like colors; do not use fabric softener; tumble dry low; remove promptly; only non-chlorine bleach when needed; cool iron if necessary; do not dry clean.

**HOW TO MEASURE**



**CHEST WIDTH**

Measure under the arm and around the fullest part of the chest with arms down, keeping tape horizontal.

**SIZE CHART**

	XS	S	M	L	XL	2XL	3XL	4XL
Chest	32-34	35-37	38-40	41-43	44-46	47-49	50-53	54-57

**COLOR INFORMATION**



Deep Black  
PMS NTR BLACK  
C



Graphite  
PMS 7540C



River Blue Navy  
PMS 533C