

PORT AUTHORITY

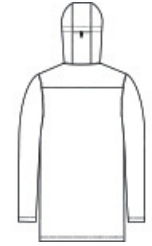
Port Authority® Collective Outer Soft Shell Parka J919



- 94/6 polyester/spandex w oven mini ripstop shell bonded to a w ater-repellent, breathable film insert, 100% polyester brushed tricot lining
- Weatherproof outer layer into w hich other Collective styles can be zipped and secured by snap attachments
- 8000MM fabric w aterproof rating
- 5000G/M2 fabric breathability rating
- Slightly longer length
- Attached, adjustable hood w ith locking draw cord
- Full-length interior storm flap
- Full-length exterior storm flap w ith snap closure
- Tw o-w ay center front zipper
- Flap-and-snap, dual-entry patch pockets w ith zippered side pockets
- Water protection method: laminate film and durable w ater-repellent finish (DWR)
- 3-in-1 system jacket: interior center front zip-in/zip-out attachment point and 3 snap points to layer additional Collective pieces



front

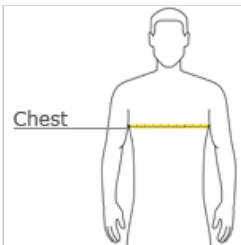


back

CARE INSTRUCTIONS

Machine Wash Cold. Only Non-Chlorine Bleach When Needed.
Tumble Dry Low . Cool Iron If Necessary.

HOW TO MEASURE



CHEST WIDTH
Measure under the arm and around the fullest part of the chest w ith arms down n, keeping tape horizontal.

SIZE CHART

	XS	S	M	L	XL	2XL	3XL	4XL
Chest	32-34	35-37	38-40	41-43	44-46	47-49	50-53	54-57

COLOR INFORMATION



Dark Olive Green
PMS Black 2C



Deep Black
PMS BLACK C



Graphite
PMS 7540C



River Blue Navy
PMS 533C