

PORT AUTHORITY

Port Authority® Collective Tech Outer Shell Jacket J920

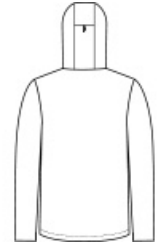


For an outer shell that delivers a refined, streamlined look alongside technical weatherproof durability, these jackets come with reflective details, waterproof zippers and a water-shedding durable water-repellent (DWR) finish.

- 100% polyester shell with DWR finish
- 100% polyester lining
- Weatherproof outer layer into which other Collective styles can be zipped and secured by snap attachments
- 5000MM fabric waterproof rating
- 5000G/M2 fabric breathability rating
- Slightly longer length
- Fully seam-sealed
- Attached, adjustable hood with locking draw cord
- Matte waterproof reverse coil zippers
- Zippered left chest pocket
- Port Pocket™ for decoration access
- Gunmetal reflective taping details at shoulders and pockets
- Adjustable cuffs
- Adjustable hem



front

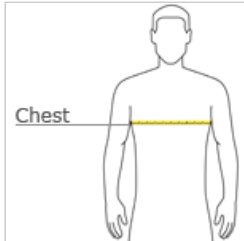


back

CARE INSTRUCTIONS

Machine Wash Cold Separately. Do Not Use Fabric Softener.
Do Not Bleach. Do Not Iron. Tumble Dry Low.

HOW TO MEASURE



CHEST WIDTH

Measure under the arm and around the fullest part of the chest with arms down, keeping tape horizontal.

SIZE CHART

	XS	S	M	L	XL	2XL	3XL	4XL
Chest	32-34	35-37	38-40	41-43	44-46	47-49	50-53	54-57

COLOR INFORMATION



Deep Black
PMS BLACK C



Graphite
PMS 7540C



True Royal
PMS 7687C