

**PORT AUTHORITY**

# Port Authority® Long Sleeve UV Daybreak Shirt W960

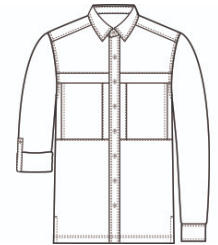


Sun and moisture are no problem for this versatile, lightweight, highly breathable shirt. Relaxed styling makes it perfect for outdoor or indoor wear.

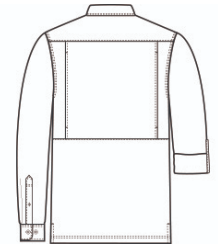
- 2.2-ounce, 100% polyester poplin
- 2.5-ounce, 100% polyester poplin (White)
- Moisture-wicking
- UPF rating of 30
- Hidden button-down collar
- Dyed-to-match buttons
- Two chest pockets with concealment flaps and hook and loop closures
- Vented back panel with mesh ventilation
- Rounded adjustable cuffs
- Roll sleeves with button tabs
- Straight hem with side vents

**CARE INSTRUCTIONS**

Fabric & Mesh Trim: 100% Polyester. Fasten Closures. Hook & Loop Before Washing. Do Not Wring. Machine Wash Cold Gentle Cycle With Like Colors. Only Non-Chlorine Bleach If Needed. Fabric Softener Not Recommended. Tumble Dry Low. Remove Promptly.

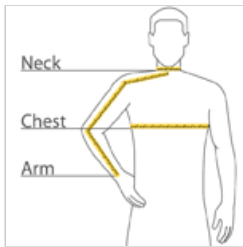


front



back

**HOW TO MEASURE**



**CHEST WIDTH**

Measure under the arm and around the fullest part of the chest with arms down, keeping tape horizontal.

**NECK**

Measure around the fullest part of the neck at the base.

**ARM**

Place hand on hip. Start at the center of the back of the neck and measure across the shoulder, to the elbow, and then down to the wrist.

**SIZE CHART**

	XS	S	M	L	XL	2XL	3XL	4XL
Chest	32-34	35-37	38-40	41-43	44-46	47-49	50-53	54-57
Neck	14 1/2 - 15	15 - 15 1/2	15 1/2 - 16	16 - 16 1/2	16 1/2 - 17	17 - 17 1/2	17 1/2 - 18	18 - 18 1/2
Arm	30 1/2	32	34	35	36 1/2	37 1/2	38 1/2	39 1/2

**COLOR INFORMATION**



Bright Seafoam  
PMS 564C



Deep Black  
PMS BLACK C



Gusty Grey  
PMS COOL GREY  
8C



Light Blue  
PMS 644C



Oat  
PMS NO MATCH



White



Yellow  
PMS 600C